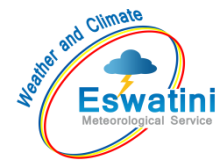


# AGROMETEOROLOGICAL BULLETIN

Doc No: TEA 3/3/7/2 F-004  
Revision No: 1  
Effective Date: 01.07.2017  
Page No: 1 of 5  
Approved by:



**REPORTING PERIOD:**  
**11 – 20 FEBRUARY 2025**



**ISSUE No.: 14**

**SEASON: 2024/25**

**RELEASED: 24/02/2025**

## CONTENTS

CONTENTS .....	1
HIGHLIGHTS .....	1
RAINFALL AND TEMPERATURES .....	2
RAINFALL .....	2
TEMPERATURES .....	3
MAIZE AND OTHER CROPS.....	3
MAIZE CROP STAGE AND CONDITION..	3
OTHER CROPS .....	3
CURRENT FARMING ACTIVITY .....	3
LIVESTOCK AND PASTURES .....	3
WATER SITUATION .....	4
MEDIUM-TERM OUTLOOK .....	4
RAINFALL .....	4
TEMPERATURE .....	4
SOIL MOISTURE .....	4
WIND SPEED.....	4

## HIGHLIGHTS

- **Above Normal rainfall received...**
- **Good vegetation condition....**
- **Weeding and legume planting activities..**
- **Decrease in rainfall is anticipated**
- **Warm to hot temperatures forecasted.....**
- **Decrease in soil moisture expected.....**

# AGROMETEOROLOGICAL BULLETIN

Doc No: TEA 3/3/7/2 F-004

Revision No: 1

Effective Date: 01.07.2017

Page No: 2 of 5

Approved by:

## RAINFALL AND TEMPERATURES

### RAINFALL

Above Normal rainfall was observed in the 2<sup>nd</sup> dekad of February 2025 (**Figure 1** and (**Map 1**).

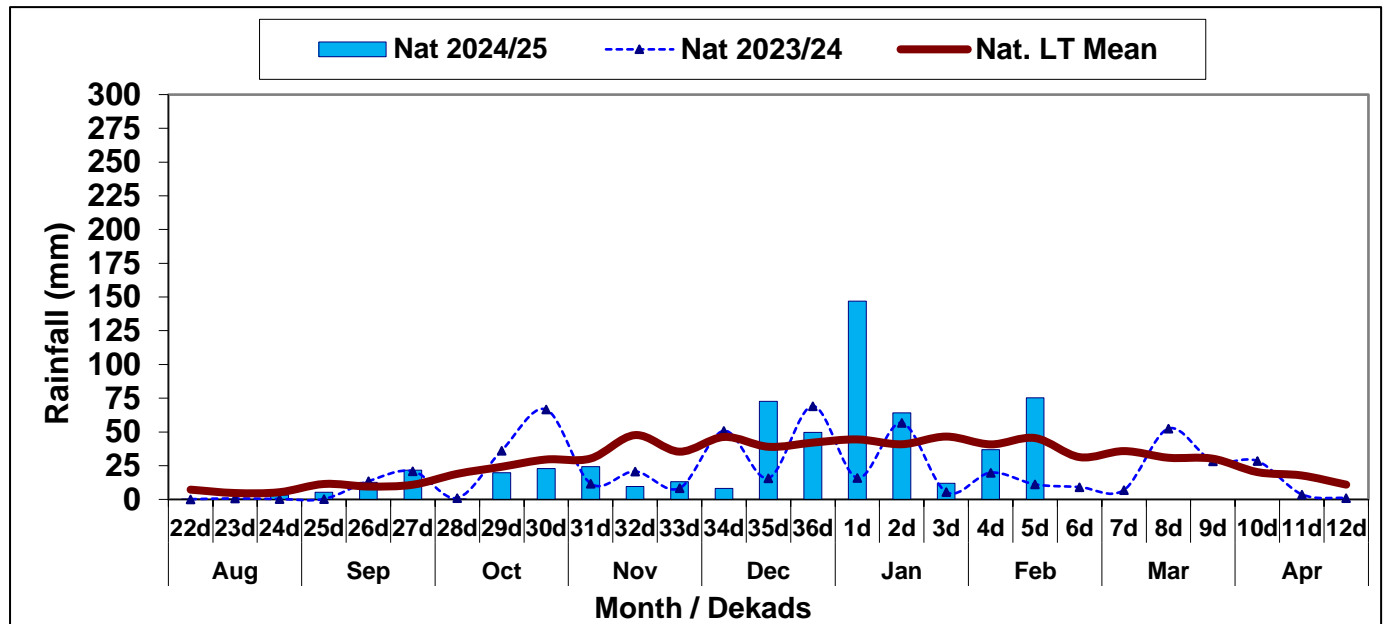
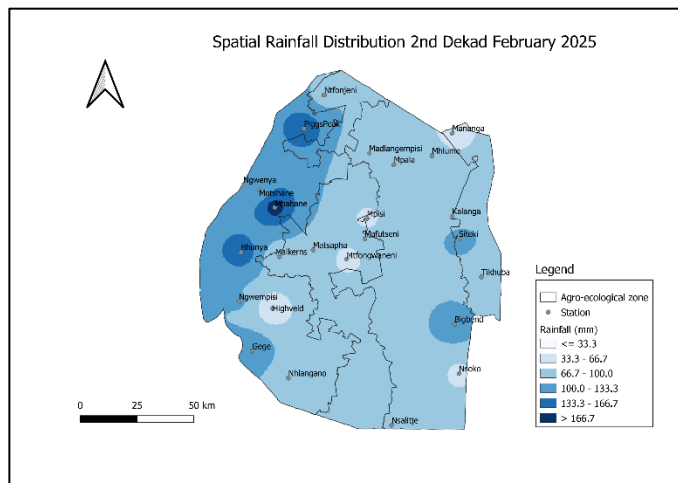
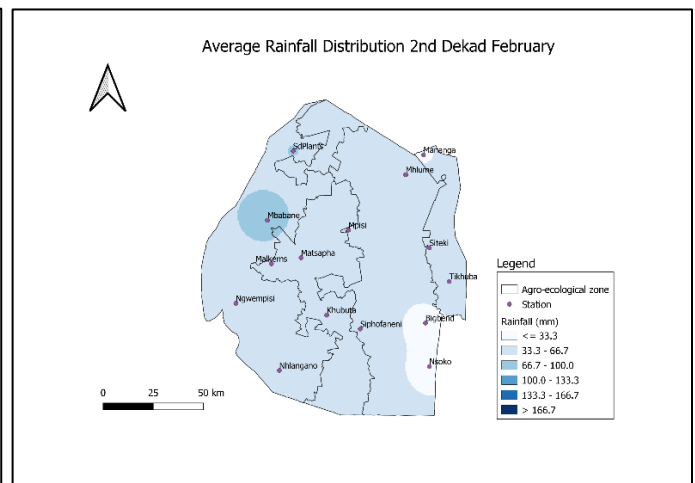


Figure 1: Rainfall distribution 2<sup>nd</sup> dekad February 2025



Map 1: Spatial rainfall distribution 2<sup>nd</sup> dekad February 2025



Map 2: Longterm Rainfall distribution 2<sup>nd</sup> dekad February

Compiled and Issued by: Agrometeorological Unit,

Swaziland Meteorological Service, Ministry of Tourism and Environmental Affairs.

Box 2652, Mbabane, Swaziland. (+268) 2404 8859 / 2404 6274. Fax: 2404 1530

E-mail: [dudu@swazimet.gov.sz](mailto:dudu@swazimet.gov.sz)

## AGROMETEOROLOGICAL BULLETIN

Doc No: TEA 3/3/7/2 F-004

Revision No: 1

Effective Date: 01.07.2017

Page No: 3 of 5

Approved by:

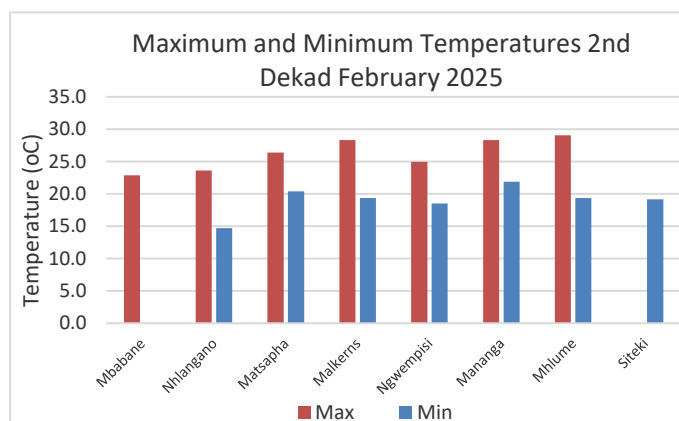
Rainfall observed was above average in most of the regions in the country (Table 1).

**Table 1:** Rainfall (mm) 2<sup>nd</sup> dekad February 2025

	HV	MV	LV	LP
2023/24	25	6	2	7
Average	57	52	33	41
2024/25	98	50	70	96
Anomaly	41	-1	37	55

### TEMPERATURES

Warm to hot temperatures were generally observed during the reporting period. (Figure 2).



**Figure 2:** Maximum and Minimum temperatures 2<sup>nd</sup> dekad of February 2025

## MAIZE AND OTHER CROPS

### MAIZE CROP STAGE AND CONDITION

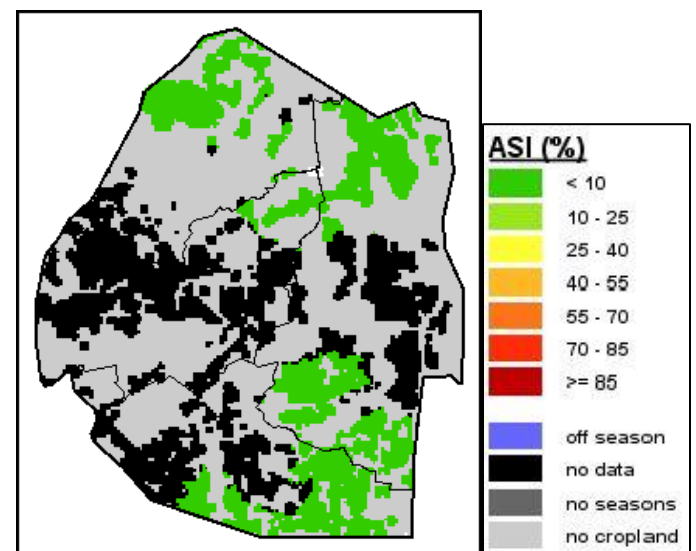
Maize is mostly at vegetative stage and the condition is mostly good.

### OTHER CROPS

Farmers are planting legumes.

### CURRENT FARMING ACTIVITY

Farmers are planting legumes and are cautioned to scout for pests, such as Fall Army Worm (FAW) and watch out for root rot in Groundnuts, especially in wet fields.



**Image 1:** Agriculture Stress Index 2<sup>nd</sup> dekad February 2025  
Source: FAO-GIEWS

## LIVESTOCK AND PASTURES

Livestock is in good condition as rangelands and water availability is reported to be in good condition in all the regions.

Compiled and Issued by: Agrometeorological Unit,

Swaziland Meteorological Service, Ministry of Tourism and Environmental Affairs.

Box 2652, Mbabane, Swaziland. (+268) 2404 8859 / 2404 6274. Fax: 2404 1530

E-mail: [dudu@swazimet.gov.sz](mailto:dudu@swazimet.gov.sz)

## AGROMETEOROLOGICAL BULLETIN

Doc No: TEA 3/3/7/2 F-004

Revision No: 1

Effective Date: 01.07.2017

Page No: 4 of 5

Approved by:

### WATER SITUATION

Most dams are at full capacity in all the regions.

### MEDIUM-TERM OUTLOOK

#### RAINFALL

A decrease in rainfall is anticipated in the outlook period.

#### TEMPERATURE

Warm to hot temperatures are anticipated in the outlook period.

#### SOIL MOISTURE

A slight decrease in soil moisture is expected in the outlook period.

#### WIND SPEED

Wind will generally be light to moderate during the outlook period.

**NB: Outlook period is ten days from date of issue**

Compiled and Issued by: Agrometeorological Unit,

Swaziland Meteorological Service, Ministry of Tourism and Environmental Affairs.

Box 2652, Mbabane, Swaziland.  (+268) 2404 8859 / 2404 6274. Fax: 2404 1530

E-mail: [dudu@swazimet.gov.sz](mailto:dudu@swazimet.gov.sz)

## AGROMETEOROLOGICAL BULLETIN

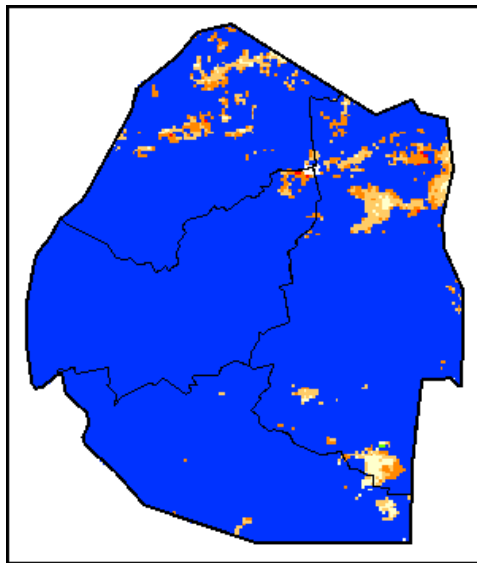
Doc No: TEA 3/3/7/2 F-004

Revision No: 1

Effective Date: 01.07.2017

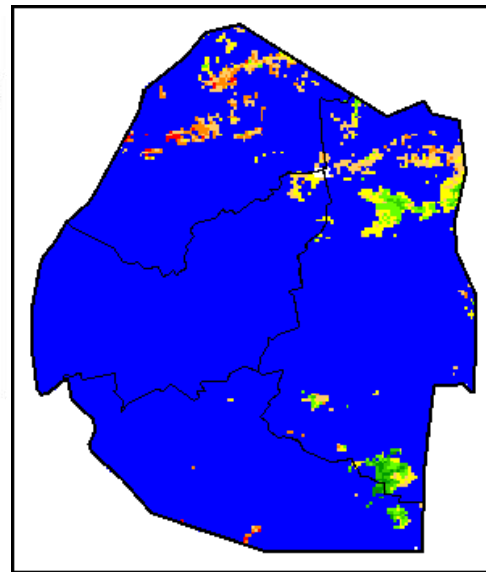
Page No: 5 of 5

Approved by:



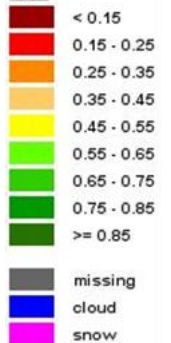
### Legend

#### Difference to LTA



### Legend

#### VHI



**Image 2:** Normalized Difference Vegetation Index (NDVI) Anomaly (2<sup>nd</sup> Dekad February 2025)  
Source: FAO-GIEWS

**Image 3:** Vegetation Health Index (VHI) (2<sup>nd</sup> Dekad February 2025)  
Source: FAO-GIEWS